

esade

RAMON LLULL UNIVERSITY

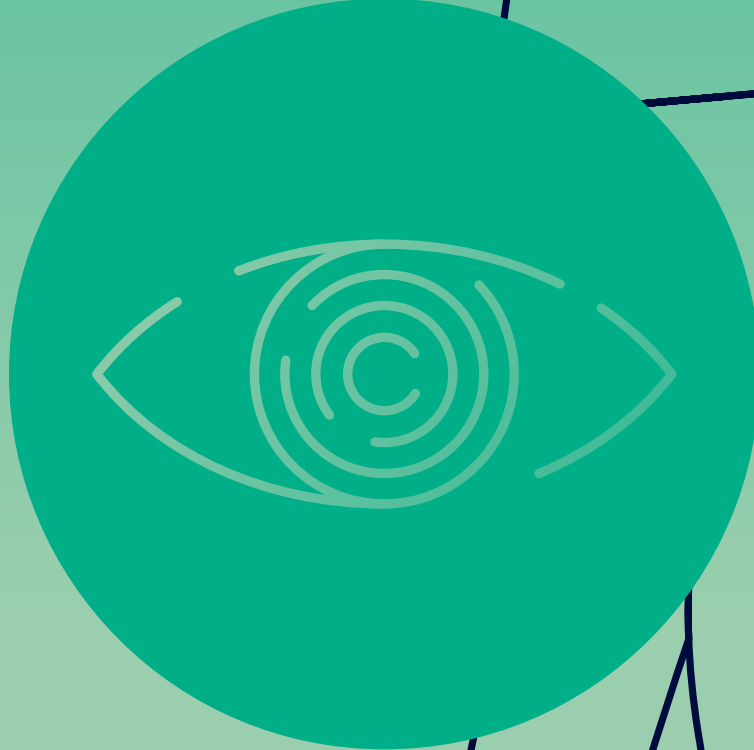
esade.edu

Annual Report

ESADE FOUNDATION

2022-2023

Do Good.
Do Better.





1

We are
Esade



2

Training that
transforms the
best talent



3

Innovation
and impact
entrepreneurship



4

Committed
to society



5

We research
with purpose



6

We promote
social debate



7

We are
economically
sustainable



8

Annexes

Contents



Jaume Guardiola

President of the Esade Foundation Board of Trustees

Message from the President of the Board of Trustees

Internationalisation, excellence and future projection

This year again, to show our commitment to transparency and our foundational values, the Esade Foundation publishes its annual report describing the most important milestones and achievements during the last academic year. The summary and accompanying data supports our position as an international benchmark institution for quality and academic innovation, research and social impact, with the capacity to attract the best talent from around the world. In the 2022-2023 academic year, **more than 70% of our Business School students were from other countries**. This international focus is supported by an **extensive international network of 267 academic partners** between the Faculty of Law, the Business School and Executive Education.

In the 2022-2023 academic year we moved forward with the implementation of an **assurance of learning** system for the continuous improvement of our students' educational experience, and we renewed our **Triple Crown —EFMD-EQUIS, AACSB and AMBA**, the three most important academic accreditations in the world—, a recognition earned by only 1% of all business schools globally.

Thanks to the support of our community of donors, we received **5 million euros** —through the private contributions of 86 organisations and 493 individual donors— which goes towards increasing our research activity and funding our **Scholarship Programme**. In addition, at the end of this academic year, the Board of Trustees developed the new **Institutional Strategic Plan (ISP)**, which sets out the strategic lines to follow during the next four years to further consolidate ourselves as a university foundation. Today, Esade has a strong management team and an inspiring and mobilising ISP, which has allowed us to continue to be internationally recognised for the professional and human quality of our graduates and for our contribution to the transformation of organisations and society.

I would like to thank all those people and organisations who support Esade, enabling us to progress and have a greater impact in the world. This Annual Report is dedicated to all of them.



Xavier Mendoza

Director General of Esade

Message from the Director General

New Strategic Plan

In this Esade Foundation annual report we share with you all the teaching, research and social debate activities we carried out during the 2022-2023 academic year. We also finalised some major projects (launched new degree programmes) and developed the new Institutional Strategic Plan (ISP) for 2023-2027. Organisations are facing major challenges such as the digital disruption, energy transition, ecological crisis, wars, and geopolitical tensions, among others. These challenges oblige organisations, and especially companies, to undertake transformation processes and major changes, sustained over time. Which is why the *leitmotiv* of the 2023-2027 ISP is inspire and contribute to the transformation with purpose of organisations and, through them, the transformation of society.

The Strategic Plan is centred around Esade's differential strengths –innovation, technology and sustainability– which are overarching and underpin our entire educational offer, together with the humanistic vision that sets us apart and is an intrinsic part of the learning experience. And, as ever, we continue our focus on the professional world and the international diversity of our students and teaching staff.

Our strengths are reflected in the data and figures in this Annual Report. For example, **more than 14,700**

students and participants placed their trust in our institution in the 2022-2023 academic year. During the year, Esade expanded its educational offer, introducing new degree programmes: the Master of Science in Digital Business, and two new bachelor's degrees, the Bachelor in Transformational Leadership and Social Impact (BiTLaSI) and the Bachelor in Artificial Intelligence for Business (BAIB).

In the area of research and social debate, the various indicators show significant progress in the 2022-2023 academic year, both in terms of the number of projects financed externally and the quality and impact of our publications. Of the 120 articles published in peer-reviewed academic journals during the year, 81 were in high-impact journals (quartiles 1 and 2). All this shared knowledge achieved **9000 impacts in the main media channels** and was also disseminated on our own channels, including our **Do Better content hub, which has more than 295,000 followers.**

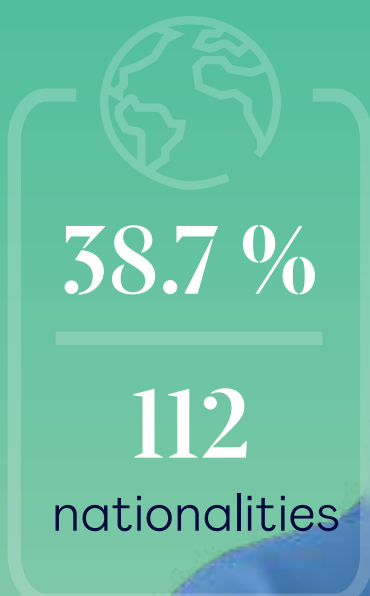
Finally, I sincerely thank all the people (students, alumni, administrative and service staff and teaching staff) and companies and organisations who make up our community and who day after day contribute to building a better Esade, one that is increasingly sustainable, with greater social impact.



2022-2023 key figures

14,738
students

5,702
International



Business School

4,104

Law School

1,391

Executive Education

9,243

71%
international students
in the Business School

35.7%
of women

1,074

professionals

↑3.7%

18.5%
International

41
Nationalities



55.8%

de los profesionales son mujeres

526 administration and services personnel (PAS)

↑ 3.4%

451 Business School and Law School School teachers

↑ 5.1%

26 language teachers

↓ 13%

46 researchers

↑ 6.9%

25 doctoral candidates

↓ 3.8%

> 73,000

Alumni

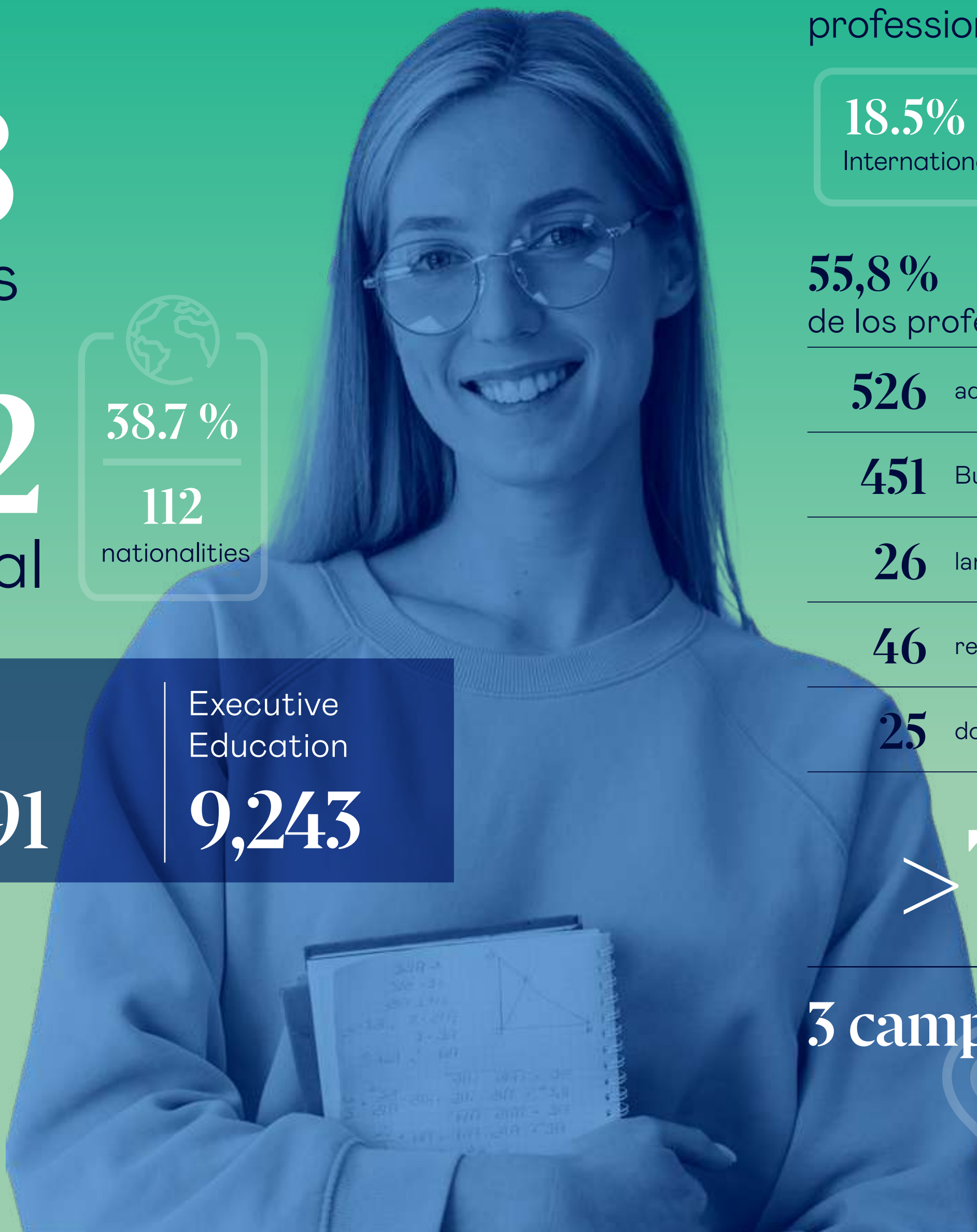
↑ 1.3%

3 campuses

→ Barcelona (Pedralbes and Esplugues)

→ Sant Cugat

→ Madrid



Income

↑14% **152.50**

€M gross income

↑13% **139.53**

€M net income

Investment in
the Scholarship
Programme

€4.6 M ↑15%

307 scholarship students (78 from the first year)

↑7%

Research



16

knowledge
generation
centres



120

articles in
peer-reviewed
journals



70

active projects
with external
financing



17

new
competitive
projects

New courses

Official courses:

- Master of Science in Digital Business
- Bachelor in Transformational Leadership and Social Impact (BiTLaSI)

New own courses offered by Ramon Llull University (URL):

- Bachelor in Artificial Intelligence for Business (BAIB)
- Bachelor of Business Administration & Bachelor in Artificial Intelligence for Business (BBA & BAIB) double degree

Updates of URL's own courses:

- Executive Master of Lifelong Learning in Business Analytics (EMIBA)
- University Diploma Specialising in Business Analytics

Courses beginning in 2023-2024:

- Master of Science in Sustainability Management
- University Master's in Legal Practice and Procurement

Rankings

#2

Diversity,
EMBA,
QS

#3

Executive
Education,
Open Programs,
Financial Times

#3

International
Course
Experience,
MBA,
Financial Times

#3

International
Students,
Masters in
Management,
Financial Times

#3

Thought
Leadership,
Masters in
Management,
QS

- 1 We are Esade
- 2 Training that transforms the best talent
- 3 Innovation and impact entrepreneurship
- 4 Committed to society
- 5 We research with purpose
- 6 We promote social debate
- 7 We are economically sustainable
- 8 Annexes

1. We are Esade



EDUCATION

We provide comprehensive training to form competent, socially responsible professionals.



RESEARCH

We generate knowledge to help improve organisations and society.



SOCIAL DEBATE

We contribute to social debate to build free, prosperous, fairer and more sustainable societies.



1.1. Educating for change since 1958

Esade was created in 1958 in response to the need to lead a collective change to transform the business fabric and to bring the country closer to the most advanced economies, always guided by a strong commitment to making a social impact.

Since then, our mission as an academic institution is to train the new generations of leaders to act responsibly, thoughtfully and commit to a fairer, diverse and equal society.

Throughout these years, we have created an educational experience based on academic excellence, knowledge acquisition and development of human values. Our essence and differential value lies in all our training programmes, innovation and our commitment to making a social impact.

We have been a member of a network of Jesuit universities **(UNIJES)** right from its beginning, and have been part of **Ramon Llull University** since 1995.

1.2. Our essence

Our mission is inspired by humanist and Christian traditions and focused on these three core areas:

We are inspired by five values: **integrity, sensitivity, diversity, contribution to the common good and commitment to a fairer and more prosperous society.**

- 1 We are Esade
- 2 Training that transforms the best talent
- 3 Innovation and impact entrepreneurship
- 4 Committed to society
- 5 We research with purpose
- 6 We promote social debate
- 7 We are economically sustainable
- 8 Annexes

2. Training that transforms the best talent



Esade works with a differential , based on the four Cs: competence, commitment, conscience and compassion). We invest in attracting and stimulating the best talent through a global process that gives students access to our Excellence Awards and the Scholarship Programme for students with financial need.

2.1. Innovation for improving the educational experience

Esade has the **Center for Excellence in Teaching & Learning (CTL)**, which supports our teachers and programmes by offering educational consultancy, training and resources for improving the students' overall learning experience. The CTL's unique approach fosters learning experiences and innovative methodologies through the integration of resources, tools and technology.

In the past year, the CTL has focused on the training and development of the teaching staff, with a particular emphasis on **diversity, equity and inclusion (DEI)**, promoting the use of innovative technologies among teachers, optimising the spaces for learning and integrating and experimenting with artificial intelligence (AI) in the educational context.

In response to the increase in the use of AI and its impact on education, the CTL has planned and executed various projects that meet the need to provide our teaching staff with the tools necessary for working with such a revolutionary technology. Various initiatives have been implemented such as the creation of support websites and specialised generative AI resources for teachers, personalised training sessions, guidance on guidelines and directives regarding the use and application of this technology in the learning process, as well as events for promoting the sharing of experiences and best practices among the academic community.



- 1 We are Esade
- 2 Training that transforms the best talent
- 3 Innovation and impact entrepreneurship
- 4 Committed to society
- 5 We research with purpose
- 6 We promote social debate
- 7 We are economically sustainable
- 8 Annexes

2.2. News, milestones and improvements in the 2022-2023 academic year

2.2.1. Business & Law School

BBA

- **Inclusion of technology in the curriculum.** The BBA program now includes more technology-related subjects, with more content and training in programming language. A Minor Accreditation has been introduced for the Digital specialisation.
- **Future Leaders Program.** Students will graduate for the first time in this programme, a collaborative initiative between Esade and the Guanghua School of Management (China), which enables Esade students to study for two years at Esade and another two years in Beijing to obtain a joint degree.



BBA & BAIB and BiTLaSI

- **We began the first year of the BBA & BAIB** (Bachelor of Business Administration & Bachelor in Artificial Intelligence for Business) double degree and the first year of the official BiTLaSI (Bachelor in Transformational Leadership and Social Impact) programme, which has been taught since 2021 as one of Esade's own courses.

MSc

- **First edition of the Master of Science in Digital Business.** This MSc integrates three key areas (management, technology and humanism) to create competent professionals in the digital sphere. More than 30 companies collaborated with problems and real case studies for the students.
- **New Master of Science in Sustainability Management.** We launched this MSc to transform the business world by providing new solutions for current and future environmental and social problems.

EMBA & MBA

- **New, hybrid-format Executive MBA.** We launched this new modality that combines the best of in-class and online formats and allows us to adapt the study programme to the needs and professional and personal pace of each student.
- **Full-time MBA programme moved.** This has been moved to the Sant Cugat campus in Barcelona, a more central location, facilitating synergies and networking with other executive programmes.



LAW SCHOOL

- **Capstone project with the European Investment Bank.** Thanks to this annual project in cooperation with European institutes, undergraduate students help boost private capital investment in Sub-Saharan Africa.
- **Public Policy Development in the European Union.** Global Governance (GEL and GDL) students have taken this new optional subject and interacted with members of the European Commission.
- **University Litigation Challenge.** Organised in conjunction with the Uría Menéndez law firm, it allows students to put into practice their knowledge of civil and mercantile litigation and criminal litigation, and talent is recognised and awarded in these areas of professional practice.
- **Moot Courts.** The number of competitions is increasing, in which participating law students simulate legal proceedings.

2.2.2. Executive Education

B2C

- **Executive Master in Digital Business, in-class/online hybrid format.** First edition of this programme focuses on developing the digital skills of professionals and executives that will allow them to apply transformational changes in their companies.
- **Advanced Management Program, "Exploring the New Global Business Landscape"** in a new format. It is aimed at preparing senior managers to lead purposeful change through global innovation and collaboration.
- **Deep Dive for Leaders.** This is a new **Diversity and Inclusion** programme aimed at promoting diversity and talent in organisations.
- **Boards of Directors in Family Businesses.** This programme provides the boards of directors of family businesses with tools that facilitate the application of best practices to enhance growth and innovation.
- **OEP Executive Transitions.** Aimed at helping companies and executives to successfully manage the various stages of a career transition.

B2B: COLLABORATION PROGRAMMES

- **WBCSD LEAP Program, co-created with the World Business Council for Sustainable Development and the Yale School of Management.** This programme is aimed at companies who wish to put forward women who are going to occupy a management position. Includes a mentor. In this collaborative programme, Esade addresses the area of female leadership and transformation and the WBCSD and Yale are responsible for the area of sustainability.



B2B: TAILOR-MADE PROGRAMMES FOR COMPANIES

- **Jadeer High Potential Development Pathway for Channels,** the sales and distribution arm of the STC Group. This is a new, three-year management and leadership programme in hybrid format. The remote sessions include an innovative and interactive methodology for the future leaders of Channels.



- **Transformative experience for Cellnex managers.** A tailor-made one-year programme in which 80 Cellnex senior managers have participated. It enhances leadership skills and helps them to develop an inspiring vision through the use of new tools and trends.



- **Career Acceleration Plan for Banco Sabadell.** A new programme in which 100 of the organisation's future executives took part. The aim was to develop their management and leadership skills in complex and changing environments, using a practical approach applicable in their day-to-day work.



- 1 We are Esade
- 2 Training that transforms the best talent
- 3 Innovation and impact entrepreneurship
- 4 Committed to society
- 5 We research with purpose
- 6 We promote social debate
- 7 We are economically sustainable
- 8 Annexes

- 1 We are Esade
- 2 Training that transforms the best talent
- 3 Innovation and impact entrepreneurship
- 4 Committed to society
- 5 We research with purpose
- 6 We promote social debate
- 7 We are economically sustainable
- 8 Annexes

2.3. Quality and excellence

Quality and academic rigour are fundamental pillars at Esade. Which is why, this year again, we have reviewed and updated our **internal quality assurance system (IQAS)**, certified by the **Catalan University Quality Assurance Agency (AQU Catalunya)**. In this update we have incorporated new processes to ensure the excellence of our training programmes.

During the 2022-2023 academic year, we submitted a self-assessment report to the **European Foundation for Management Development (EFMD)** to renew

our **EQUIS (EFMD Quality Improvement System)** accreditation. We also submitted an interim report for accreditation by the **Association to Advance Collegiate Schools of Business (AACSB)**.

In addition, we actively participated in the renewal of **AQU Catalunya** certification for the Manual docentia (teaching handbook), which includes **Ramon Llull University's** teaching assessment handbook.

AWARDED THE TRIPLE CROWN FOR OUR QUALITY

Esade's commitment to academic excellence, innovation and continuous improvement has earned us the recognition of the three most important quality accreditation organisations in the world:



Only 1% of business schools worldwide have this triple crown.

Assurance of Learning (AoL)

We are making solid headway in the deployment of a learning assurance system for all our official degree programmes. It has already been implemented for our Business School programmes: BBA, Full-time MBA, MSc in Finance and MSc in Marketing. By the end of 2024, the system will have been fully implemented in both the Business School and the Law School.



2.4. Global partnership network

Esade has a global partnership network with leading and prestigious academic institutions that promote our global presence and the internationalisation of our programmes. In the 2022-2023 academic year, the network was formed of 267 academic partners, including business schools, faculties of law and faculties in the areas of political science, economics, data science and artificial intelligence.

267 Academic Partners | **137** managed by our **Business School**
130 managed by our **Law School**

In the **last annex to this document** is a list of the faculties that form part of our global network



Ramon Llull University, new member of ENGAGE.EU

With the European Commission's approval on 3 July 2023 of the enlargement of ENGAGE.EU Ramon Llull University became a full member of this alliance of European universities in the area of business, economics and social sciences. Through this alliance, Esade will make proposals to address the future challenges faced by the European Union.

ENGAGE.EU includes the following universities: Universität Mannheim (Germany), Luiss Libera Università Internazionale degli Studi Sociali Guido Carli (Rome, Italy), Norwegian School of Economics (Bergen, Norway), Tilburg University (Netherlands), University of National and World Economy (Sofia, Bulgaria), Université de Toulouse 1 Capitole (France), WU Vienna University of Economics and Business (Austria), University of St. Gallen (Switzerland) and Ramon Llull University (Spain).

The 32nd Annual EAIE Conference brings together Esade's academic partners

Held in Barcelona from 13-16 September 2022, this event of the European Association for International Education (EAIE) fosters professional relationships among 6,400 attendees from educational institutions from more than 95 countries. During the 32nd edition of this annual conference, Esade hosted more than 60 delegates from partner universities, in the Sant Cugat campus and during the networking reception held in their honour. It also took the opportunity to strengthen ties with the international Jesuit education community at an event held at the Pedralbes campus.

- 1 We are Esade
- 2 Training that transforms the best talent
- 3 Innovation and impact entrepreneurship
- 4 Committed to society
- 5 We research with purpose
- 6 We promote social debate
- 7 We are economically sustainable
- 8 Annexes

MAIN NETWORKS



CEMS
The Global Alliance in
Management Education



PIM
Partnership in
International Management



THEMIS
The Joint Certificate
in International and
Business Law



CTLS
Center for Transnational
Legal Studies



SIGMA
Societal Impact &
Global Management
Alliance



ECOL
European Common
Online Learning



FOME Alliance
Future of Management
Education

INTERNATIONAL ASSOCIATIONS



AACSB International
Association to Advance
Collegiate Schools of Business



AMBA
Association of MBAs



BALAS
The Business Association
of Latin American Studies



CEMS
The Global Alliance in
Management Education



CTLS
Center for Transnational Legal
Studies



CLADEA
Consejo Latinoamericano de
Escuelas de Administración



ECOL
European Common Online
Learning



EDAMBA
European Doctoral Association
in Management and Business
Administration



EFMD
European Foundation for
Management Development



EMBAC
Executive MBA Council



EUDOKMA
European Doctoral School on
Knowledge and Management



FOME Alliance
Future of Management
Education



GBSN
Global Business School Network



GMAC
Graduate Management
Admission Council



IAJBS
International Association
of Jesuit Business Schools



PIM
Partnership in International
Management



PRME
Principles for Responsible
Management Education



SCIENCE | BUSINESS
Innovation intelligence and
networking



SEKN
Social Enterprise
Knowledge Network



SIGMA
Societal Impact and Global
Management Alliance



THEMIS
The Joint Certificate in
International and Business Law



UNICON
International University
Consortium for Executive
Education

1 We are Esade

2 Training that transforms the best talent

3 Innovation and impact entrepreneurship

4 Committed to society

5 We research with purpose

6 We promote social debate

7 We are economically sustainable

8 Annexes



2.5. Esade in the rankings

- 1 We are Esade
- 2 Training that transforms the best talent
- 3 Innovation and impact entrepreneurship
- 4 Committed to society
- 5 We research with purpose
- 6 We promote social debate
- 7 We are economically sustainable
- 8 Annexes

#3

International Course Experience
(MBA, worldwide)
Financial Times

#3

Executive Education
(Open Programs, worldwide)
Financial Times

#3

3 Thought Leadership
(Masters in Management, worldwide)
Financial Times

#1

Best Reputation for Training
(Spain)
Merco

Quality of programmes

- ## #3

Executive Education,
(Open Programs, worldwide)
Financial Times
- ## #10

Best EMBA
(worldwide)
QS
#8 in Europe
- ## #30

Best MBA
(worldwide)
Financial Times
#10 in Europe
- ## #16

Best Master in International Management
(worldwide)
Financial Times
#14 in Europe

- ## #17

Business & Management Studies (Ramon Llull University)
(worldwide)
QS
#9 in Europe
- ## #2

Best Bachelor of Business Administration
(Spain)
El Mundo
- ## #4

Best Double Degree BBA & Law
(Spain)
El Mundo
- ## #4

Best Law School,
(Spain)
CyD

Diversity

- ## #2

Diversity EMBA
(worldwide)
QS
- ## #3

International Students - Master in International Management
(worldwide)
Financial Times

Entrepreneurial ecosystem

- ## #3

MBA for Entrepreneurs
(worldwide)
Poets&Quants
- ## #3

Entrepreneurship
(Europe)
Business Week
- ## #5

Entrepreneurial Career Specialization
(MBA, Europe)
QS

Professional development

- ## #5

Employability - Master in Marketing Management
(worldwide)
QS
- ## #6

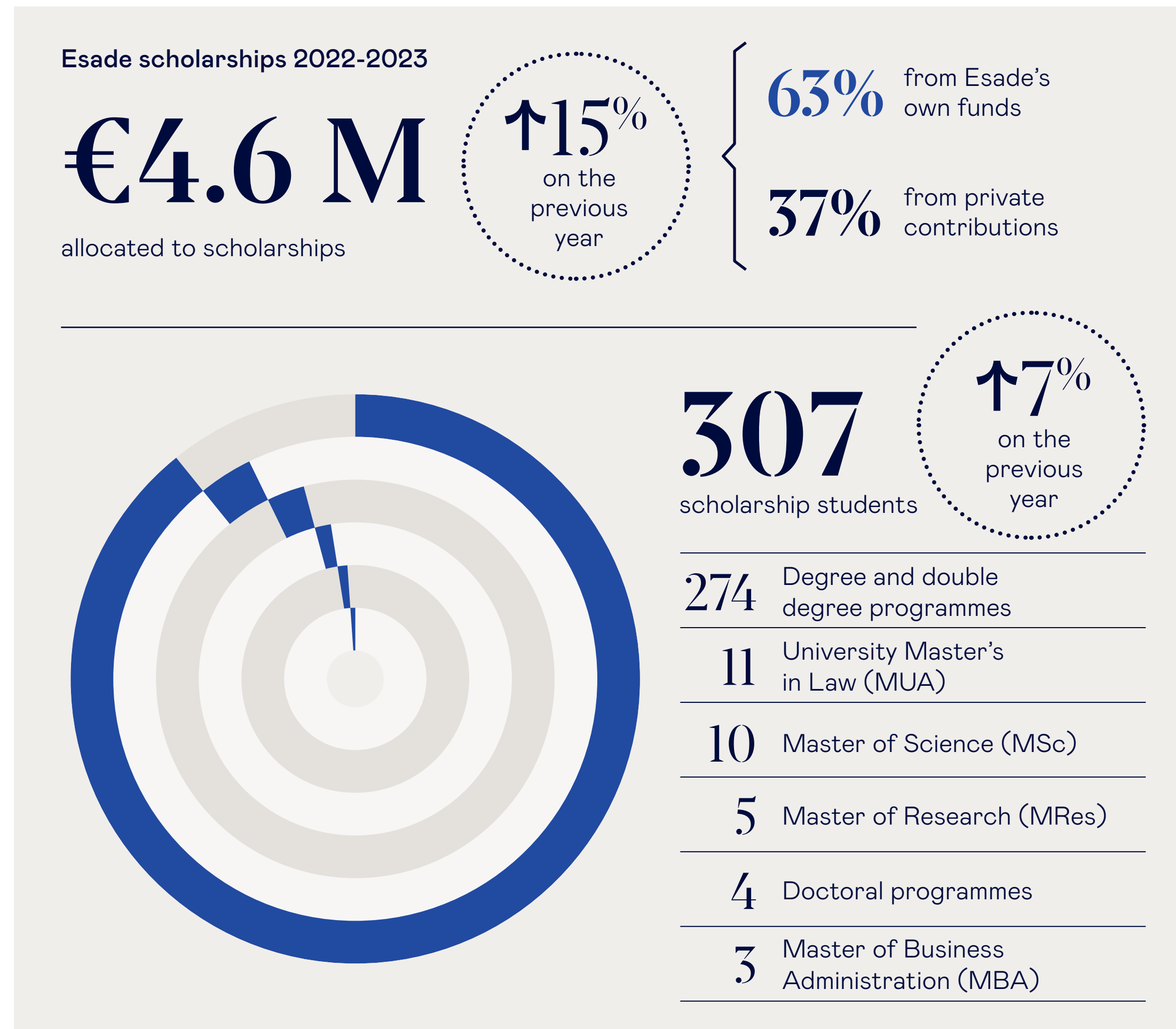
Career Outcomes, EMBA
(worldwide)
QS
- ## #2

Salary Increase, MBA
(Europe)
Financial Times

- 1 We are Esade
- 2 Training that transforms the best talent
- 3 Innovation and impact entrepreneurship
- 4 Committed to society
- 5 We research with purpose
- 6 We promote social debate
- 7 We are economically sustainable
- 8 Annexes

SCHOLARSHIPS FOR ATTRACTING THE BEST TALENT

Esade's **Scholarship Programme** opens the doors to talented students, allowing students with an excellent academic record and diverse socio-economic circumstances to study at our school, thereby promoting diversity and equity in the classroom. The scholarships cover from **50 to 100% of tuition fees**.



2.6. Esade careers, we promote employability

The Esade Careers team is formed of **more than 30 experts from 14 countries with a shared mission:** to embark on a transformative process with the students, to guide them in the development of their skills and to connect companies with talent.

The team's multicultural nature and specialisation in recruitment, human resources, coaching and consultancy allows us to establish strategic links with companies and **attract 146 companies from multiple sectors to our job fairs: finance, consultancy, law** and, recently, **industry, technology and impact**. Companies such as Amazon, Glovo, Bayer, Eurofins, Penguin Random House, Hewlett Packard, Philip Morris Internacional, Danone and Bloomberg have participated in our job fairs, together with 48 professional offices, such as Cuatrecasas, BDO Abogados and Uría Menéndez, among others. A total of 1,817 students had the opportunity to look for new work experiences and to increase their knowledge of the trends in each sector.



1 We are Esade

2 Training that transforms the best talent

3 Innovation and impact entrepreneurship

4 Committed to society

5 We research with purpose

6 We promote social debate

7 We are economically sustainable

8 Annexes

KEY PLACEMENT DATA

91% of 2022-2023 MBA students found work within 3 months of graduating, earning an average annual income of €88,738.

Overcoming challenges:

We have achieved a student placement of

66%

in the consultancy, technology and financial services sectors, the most popular among students and the most competitive since the conjuncture of disruptive phenomena such as the Great Resignation, Brexit and war, which have affected the labour market. This was possible due to the distinctive, comprehensive preparation in the professional development and search for new professional horizons using tools such as the **Career Acceleration Program (CAP)**.

100% of undergraduate students concluded their studies with professional experience and 97% of those actively seeking opportunities found work within 3 months of completing their programme, mainly in the consultancy sector (41.45%), technology (15.79%) and retail; the latter showed a surprising increase (10.53%).

46%

MSc students found work outside their country, so a good number of the students seeking mobility -which is common in these programmes- had their expectations met.

There was a salary increase of

15%

on the 2021-2022 course (€45,519), with an average salary of €52,424 for MSc students.

- 1 We are Esade
- 2 Training that transforms the best talent
- 3 Innovation and impact entrepreneurship
- 4 Committed to society
- 5 We research with purpose
- 6 We promote social debate
- 7 We are economically sustainable
- 8 Annexes

3. Innovation and impact entrepreneurship



Three decades of promoting entrepreneurship

Entrepreneurship has been present at Esade since its foundation. We were pioneers in teaching entrepreneurship, with the Business Promotion course in the 1963 degree programme. In 1984, we introduced Business Startups and, in 1992, the Esade Business Startup Program, the true predecessor of our Esade Entrepreneurship Institute (EEI), which has just turned 30.

This anniversary is an excellent opportunity to recognise the work of the EEI and to continue to promote entrepreneurship in our institution, in which we have managed to create an entrepreneurial ecosystem that is an international reference. Our aim is that the students internalise entrepreneurial skills, aptitudes and knowledge and create initiatives that help improve society.

These are some of the activities carried out to celebrate the EEI's 30th anniversary:

- **30th anniversary presentation ceremony** (18 October 2022)
- Promoting Entrepreneurship: lessons learnt from research (14 March 2023)
- **Impact Entrepreneurship Day** (19 April 2023)
- **Esade Entrepreneurship Summit** (18-20 May de 2023)
- Entrepreneurship to Transform: building the future of entrepreneurship at esade (14 December 2023)



- 1 We are Esade
- 2 Training that transforms the best talent
- 3 Innovation and impact entrepreneurship
- 4 Committed to society
- 5 We research with purpose
- 6 We promote social debate
- 7 We are economically sustainable
- 8 Annexes

For the seventh consecutive year, we are the main sponsors of 4YFN

Since 2016, our institution has been the academic partner of **4 Years From Now (4YFN)**, a world reference meeting point for entrepreneurship and innovation within the framework of the **Mobile World Congress (MWC)**.

Coinciding with the EEI's 30th anniversary, the 2023 edition was held under the slogan "Entrepreneurship through the EdTech Perspective", at which we led the 4YFN's EdTech debate. During the four days of the trade show, in various sessions and talks we discussed how artificial intelligence (AI) and the metaverse will transform education, the new trends in EdTech and the role of women in AI.



3.1. The Rambla of Innovation

Our ecosystem for boosting innovation in entrepreneurship is located in the Sant Cugat campus, with seven labs for connecting promoters of change with companies and institutions:



DecisionLab



eGarage



FabLab
Sant Cugat



FinanceLab



FusionPoint



MediaRoom



eWorks

In addition to the coworking space in Sant Cugat, we have opened Entrepreneurship Jungle, a **new space in the Barcelona campus** which brings The Rambla of Innovation to the MBA students.

With this complete ecosystem we offer **experiential learning** opportunities through entrepreneurship and social impact projects in which students work with real-life cases.

Annual ReportEsade Foundation
2022 - 2023

- 1 We are Esade
- 2 Training that transforms the best talent
- 3 Innovation and impact entrepreneurship
- 4 Committed to society
- 5 We research with purpose
- 6 We promote social debate
- 7 We are economically sustainable
- 8 Annexes

Interdisciplinary collaboration

The courses taught at Fusion Point gather engineering, business and design students to work together on developing innovative solutions to complex problems from different perspectives.

9 academic programs

450 students

7 stakeholder challenges

>10 ATTRACT technologies applied in the courses

85 innovation projects

>500 hours of experiential learning

**Developing the entrepreneurial spirit**

eWorks and **eGarage** offer activities for the acquisition of business skills and competencies. These include conferences, incubation and acceleration programmes and Impact Community networking events that connect our students with professionals to foster an entrepreneurial culture.

30

entrepreneurial events

71

projects accelerated and 30 incubated

>2,800 students

3

consultancy projects

**Research to better understand business dynamics**

Psychology, sociology and economics come together at the **Decision Lab** to explore the behaviour of people and groups in the ever complex world of business. The acquired knowledge better prepares future business leaders to make informed decisions and to create positive work environments

22

studies

22

researchers

11 PhD

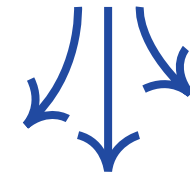
+

2 post-docs

>3,000 students



3.2. Esade Alumni



The community of former alumni, Esade Alumni, share our values and commitment, thus contributing to the progress of their organisations and the sustainable development of society.

>73,000
esadealumni

Alumni from different generations, nationalities and cultures

1. Knowledge and generation of social debate

Offering continuous training and a space for knowledge dissemination by creating environments for social debate, reflection and learning.

Training for the community
→ 3,379 participants
→ 28 in continuity programmes

Sustainability training
→ 3,578 participants
→ 70 sessions
→ 5,891 h of knowledge

Promoting social debate
→ 3,978 participants
→ 58 sessions
→ 9,117 h of knowledge

Esade Matins and Breakfasts
→ 980 participants
→ 17 sessions

2. Guiding their professional growth

We support the professional growth of our alumni through services that improve job skills and personal development.

Esade Alumni Careers
→ 486 career guidance sessions
→ 40 different alumni nationalities advised

JobTeaser jobs board
→ 2,440 members
→ 6,000 job offers published

Firsthand mentoring platform
→ 469 mentors
→ 120 mentored
→ 87 sessions
→ 52 nationalities

3. Connecting communities

The former alumni of Esade foster connections between related communities, both nationally and internationally, to facilitate the exchange of knowledge and mutual contribution of value.

>27.000 international Alumni
→ 74 international chapters
→ >6,000 former alumni in Spain, outside the Barcelona and Madrid campuses
→ 12 territorial clubs



4. Fostering entrepreneurship

Promoting innovation and entrepreneurship through a solid investor and entrepreneur network that fosters economic, technological and social development

>250 business angels
→ 23 investment forums + 3 international forums
→ 481 projects received
• 25 projects financed
→ €3,1 M invested
• €124 k average investment per project

5. Promoting impact initiatives

Encouraging the active participation in transformative impact projects that contribute to building a fairer and more sustainable world.



In the next section of this report, we describe the different social impact initiatives developed by the Esade Alumni community

- 1 We are Esade
- 2 Training that transforms the best talent
- 3 Innovation and impact entrepreneurship
- 4 Committed to society
- 5 We research with purpose
- 6 We promote social debate
- 7 We are economically sustainable
- 8 Annexes

- 1 We are Esade
- 2 Training that transforms the best talent
- 3 Innovation and impact entrepreneurship
- 4 Committed to society
- 5 We research with purpose
- 6 We promote social debate
- 7 We are economically sustainable
- 8 Annexes



4. Committed to society



4.1. Esade sud: commitment to our community

Esade SUD collaborates with institutions and initiatives that promote social justice from a professional perspective and as part of the different programmes that we describe below.

SUD Service Learning

This is the support service for developing subjects using **Learning-Service** teaching methodology. During the 2022-2023 academic year, our professors taught **14 subjects**, with a total of **591 students**.

SUD Workshop

Organised with the Department of International Academic Relations, this programme offers professors the opportunity to collaborate in the **training of professors linked to the Company of Jesus** in emerging countries.

Annual Report

Esade Foundation
2022 - 2023

- 1 We are Esade
- 2 Training that transforms the best talent
- 3 Innovation and impact entrepreneurship
- 4 Committed to society
- 5 We research with purpose
- 6 We promote social debate
- 7 We are economically sustainable
- 8 Annexes



SUD Stage

Organised with the Department of People, this programme is open to administration and services personnel (PAS), allowing them to collaborate professionally with organisations linked to Esade SUD. For two years, **Roque Adrada** and **Francesca Ricaldi** (Esade Careers) worked with the **Professional Guidance Centre** of the **José Simeón Cañas University** in El Salvador; and stayed for three weeks in the country.

SUD Volunteering

This programme offers students the possibility to **volunteer locally or internationally with curricular recognition**, either during the course or summer intensive courses. **75 students** took part and we collaborated with **23 local and international institutions**.



SUD Internship & SUD Consulting

A total of **59 students**, both bachelor's and master's degrees students, took part in these solidarity internships programmes. We collaborated in **35 projects from 12 countries** in the Euro-Mediterranean region, Asia, Africa, Latin America and the Caribbean. In total, **more than 20,000 hours of pro bono legal advice and management consultancy** were provided for projects that promote inclusive economic development and promotion of human rights

Together

This programme, organised with Esade Alumni Social, is offered to former alumni for them to help institutions in the Global South to strengthen **social and solidarity economy initiatives** for a period of three years, with a stay in the countries of origin. In the 2022-2023 academic year, our collaboration involved:

10
Projects

21
Alumni



4.2. Esade alumni social initiatives

Giving-back consultants

Pro bono management consultancy to strengthen third-sector organisations, both national and international, with the support of La Caixa Foundation.

>400
active participants in
consultancy programmes

45
projects in Spain (42), Andorra (1), Nepal (1) and Switzerland (1)

>17,000 h
of knowledge dedicated
to society

Solidarity Hackathon

This initiative offers an innovative intensive volunteering formula through a participatory experience. Using design thinking methodology, former alumni worked for a week on solving a strategic challenge in order to provide innovative solutions for a social impact project.

80
participants in
multidisciplinary teams

56%
of Esade alumni
are from **15 countries**

2
NGOs have benefited: Dream Nepal and Plant for the Planet

4.3. We care for the community

People are the most important asset in our community. Esade fosters a sense of belonging and commitment to the values of our institution through different services and actions aimed at professional development and personal wellbeing.



Psychological and Counselling Service (PACS)

This service for students promotes wellbeing and overall health. In the 2022-2023 academic year we provided individual assistance in counselling sessions, as well as prevention and health promotion via the **Mental Health Matters** and **Esade Wellbeing Days** programmes and the Academics project, which supports the students during the exam period.

Esade Wellbeing Days

The programme promoted wellbeing and healthy living in our community, offering monthly activities throughout the academic year, which included vinyasa yoga, active meditation and a workshop on vegan nutrition, among others.



Events for our faculty and professionals

These included **Christmas cocktail receptions in Madrid and Barcelona**, both in-person and with an excellent turnout. We also had our **annual meeting** in July to take stock of the year and to present the 2023-2027 strategic plan, Inspire to Transform, as well as various **online meetings**.



- 1 We are Esade
- 2 Training that transforms the best talent
- 3 Innovation and impact entrepreneurship
- 4 Committed to society
- 5 We research with purpose
- 6 We promote social debate
- 7 We are economically sustainable
- 8 Annexes

4.4. Our commitment to sustainability

Ethics, social responsibility and sustainability are the key pillars of our institution. The 2022-2023 academic year included the following initiatives.

- 1 We are Esade
- 2 Training that transforms the best talent
- 3 Innovation and impact entrepreneurship
- 4 Committed to society
- 5 We research with purpose
- 6 We promote social debate
- 7 We are economically sustainable
- 8 Annexes

Sustainability week 2023: how to lead real change?

The last edition of Sustainability Week, 20-25 February 2023, included various curricular and extracurricular activities aimed at providing students with a space for reflection on individual responsibility in leading change towards fairer and more sustainable development.

Conversations and guidance in creating team spirit

During the 2022-2023 academic year we also set up the **Antenna for Social Innovation**, a new meeting point for reflection and debate aimed at bringing the activity of the Institute for Social Innovation to our community.

The **First-Year Experience** programme increased its offer of activities to help first-year students to adapt and integrate into the School.

A community committed to climate action

To provide an adequate response to the climate crisis, in July 2023 the Esade Foundation's Board of Trustees approved the redefinition of our decarbonisation target: to achieve **carbon neutrality in 2024** in Scope 1 (direct emissions from the activity) and Scope 2 (emissions derived from energy consumption), by offsetting non-reducible greenhouse gas emissions (GHGs), and achieving a 33% reduction in Scope 3 emissions (associated with mobility) by 2030, using emissions in 2019 as a base.

We are strengthening our model of governance and corporate compliance

Firstly, we have obtained the **Business School Impact System (BSIS)** label, awarded by the **European Foundation for Management Development (EFMD)**, in recognition of our commitment to making our impact more transparent.

We have also prepared the scorecard for the **Sustainability Plan**, which includes more than 100 indicators that define the monitoring and accountability of the Plan's progress. Finally, we have obtained **ISO 14064** certification, which verifies the calculation of GHG emissions

Incorporating sustainability into educational experiences

We incorporated sustainability in a cross-cutting manner into the curricula and increased the number of transformative educational experiences, such as collaborative work with the community and finding solutions to social and environmental problems.



- 1 We are Esade
- 2 Training that transforms the best talent
- 3 Innovation and impact entrepreneurship
- 4 Committed to society
- 5 We research with purpose
- 6 We promote social debate
- 7 We are economically sustainable
- 8 Annexes

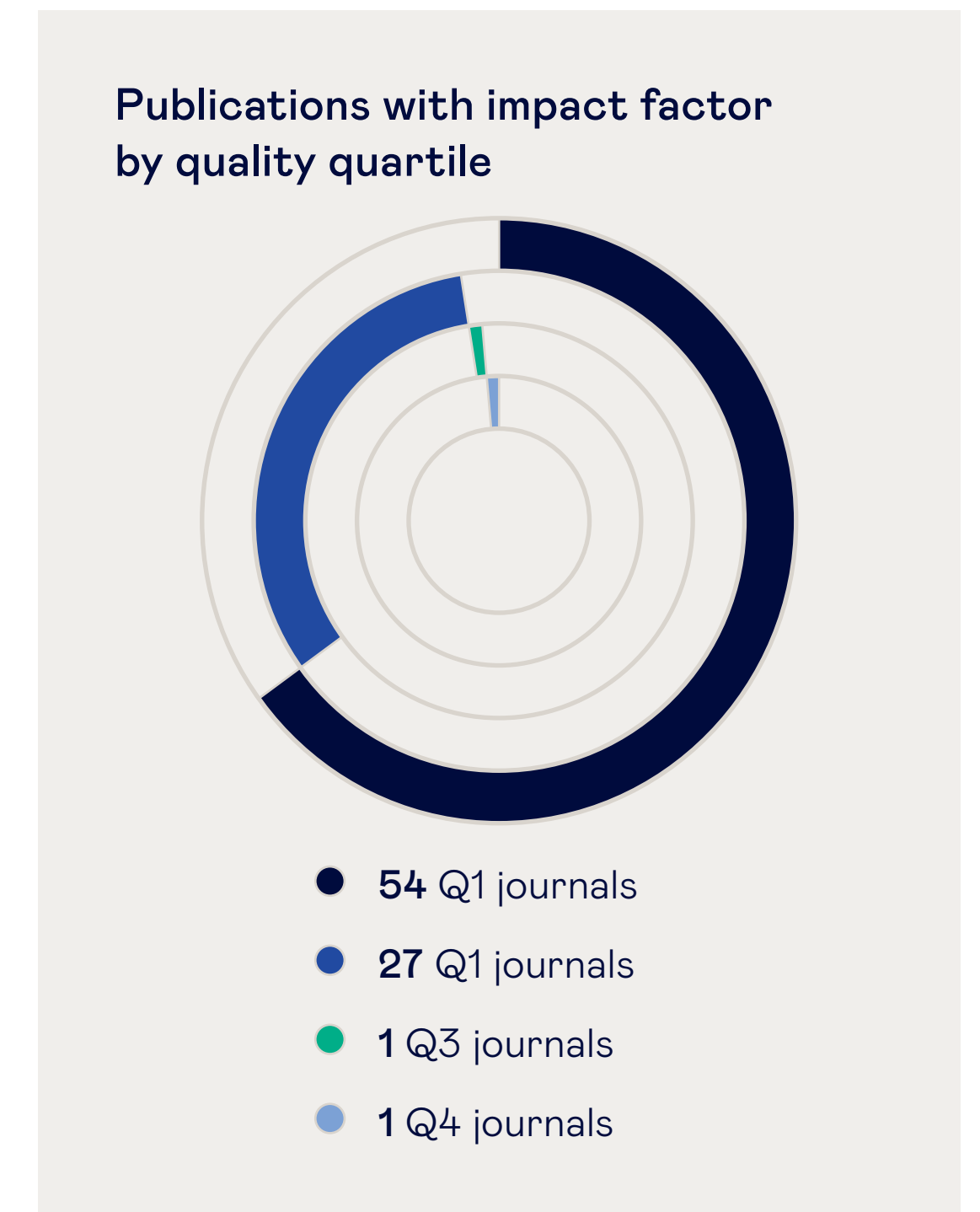
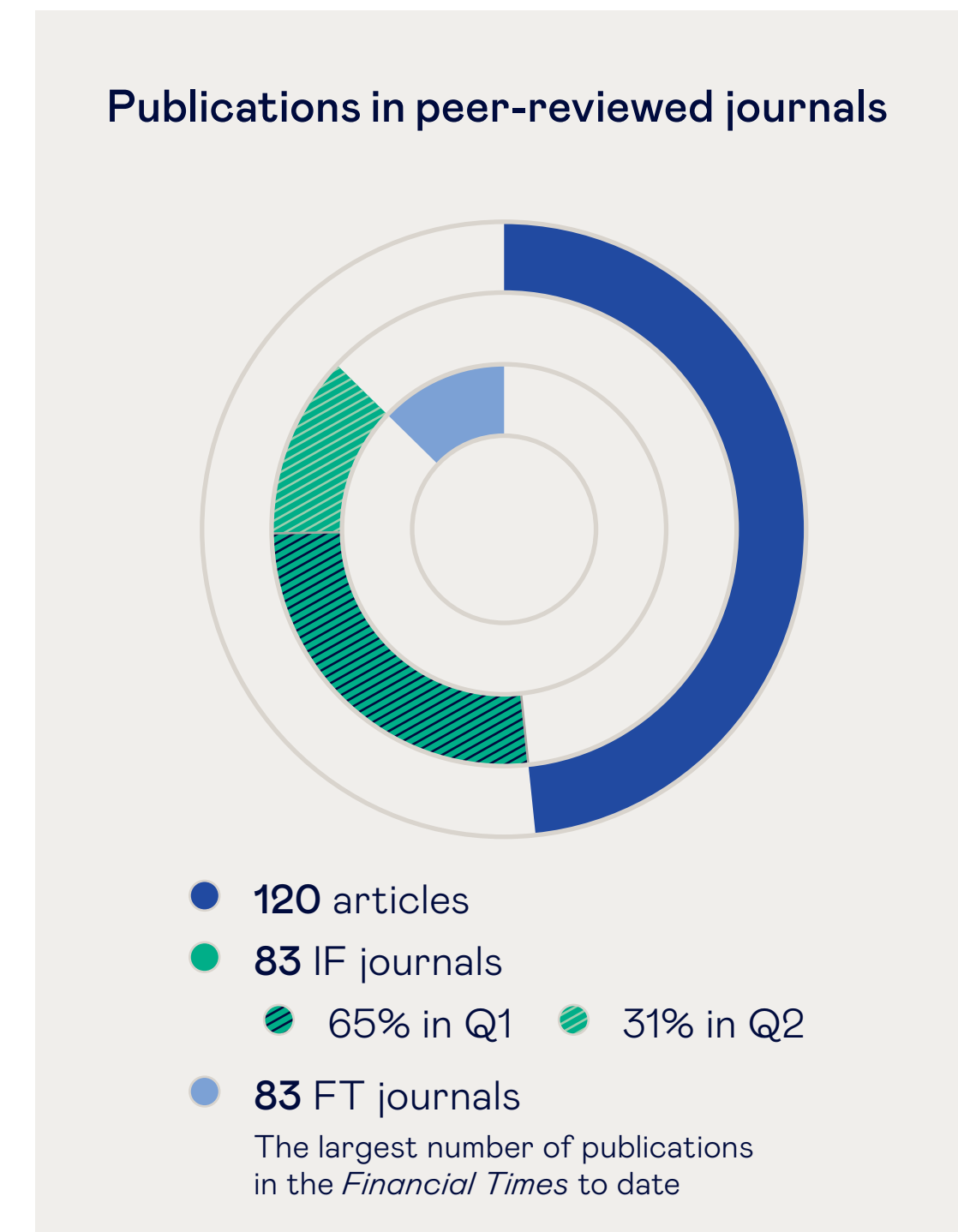


5. We research with purpose

One of Esade's main principles is to generate knowledge to contribute to improving organisations and society.

At Esade we are constantly researching to advance knowledge in management, economics, law and other areas of training that we provide. During the 2022-2023 academic year we continued to make a significant academic and scientific contribution, which we detail below:

<p>16 knowledge generation centres</p>	<p>17 new research projects</p>	<p>70 70 progress with external funding</p>	<p>20 post-doctoral researchers</p>
---	--	--	--



- 1 We are Esade
- 2 Training that transforms the best talent
- 3 Innovation and impact entrepreneurship
- 4 Committed to society
- 5 We research with purpose
- 6 We promote social debate
- 7 We are economically sustainable
- 8 Annexes

Other academic publications



- 12 books
 - 28 book chapters
- 10 case studies
- 5 publications in Esade journals
- 12 doctoral theses
- 12 awards and recognitions:

- **Collet, F.** → AOM Best Paper Award: ONE Division
- **Grabs, J.** → Lynton Keith Caldwell Award for best book on environmental politics and policy
- **Iglesias, O.** → Teaching Award: EMBA Esade
- **Iglesias, O.** → Teaching Award: PTMBA UW Vienna
- **Iglesias, O.** → Best Paper Award finalist, Business & Society winner 2022
- **Noethen, D. & Alcázar Toribio, M. R.** → JGM Best Paper Award: 2023 EURAM Conference Winner 2023
- **Ocampo, Anna Carmella** → Academy of Management Careers Division Young Scholar

- **Ocampo, Anna Carmella** → *Journal of Applied Psychology* Editor's Choice Award
- **Rey-Biel, P.** → J-PAL Europe Visiting Researcher
- **Rey-Biel, P.** → Elected Member of the Council of the Economic Science Association
- **Uzunca, Bilgehan** → *Poets&Quants'* Top 50 Undergraduate Professors of 2022
- **Wareham, J.** → Runner-up Best Paper Award (2022).



Recognition for our researchers

Elena Bou, professor of the Department of Operations, Innovation and Data Sciences, was one of the winners at **the first edition of the Sustainability Award** (of the Nobel Sustainability Trust), for her contribution to promoting green energy among European startups through her project EIT InnoEnergy.

Four of our researchers were among the most cited scientists in the world, according to the **World's Top 2% Scientists**, a list developed by Stanford University:

- **Cristina Giménez Thomsen**, director of Mission and Impact at Esade and professor of Operations and Supply Chain Management.
- **Tobias Hahn**, professor of the Department of Society, Politics and Sustainability and member of Esade's Institute for Social Innovation
- **Uri Simonsohn**, professor of the Department of Operations, Innovation and Data Sciences.
- **Frank Wiengarten**, Vice-Dean of Research and professor of the Department of Operations, Innovation and Data Sciences.



5.1. Our key research projects

- 1 We are Esade
- 2 Training that transforms the best talent
- 3 Innovation and impact entrepreneurship
- 4 Committed to society
- 5 We research with purpose
- 6 We promote social debate
- 7 We are economically sustainable
- 8 Annexes

EsadeGeo

EsadeGeo participated in the **EU-VALUES** network (EU Research and Education Network on Foreign Policy Issues: Values and Democracy), which gathers together 21 leading higher education institutions in Europe and other parts of the world to enhance debate and improve the knowledge of values and democracy in the European Union's foreign policy.



Business Network Dynamics (BuNeD)

Through the project **Enacting Responsible Behaviors in the Wake of Human Rights Allegations in Supply Chains**, the research group BuNeD analysed companies faced with allegations of human rights violations related to their supply chain. They studied whether these companies assume their responsibility and enact corrective measures, and whether the country's regulations regarding due diligence in the supply chain have any effect.



Research Group in Leadership and Innovation in Public Management (GLIGP)

Through the project **Applications of Experimental Economics to the Evaluation of Behavior and to Optimal Decision Making**, the GLIGP advances knowledge on the impact of different forms of evaluation on three issues of social relevance: evaluation of candidates in the labour market, evaluation of market alternatives that reflect consumer preferences and evaluation of scientific studies for decision makers.



Esade Center for Social Impact (ECSI)

The ECSI runs the **Zero Waste Demo Day** project, which is linked to the Zero Waste Accelerator and forms part of **Hub B30 (Beyond Circularity)**. It is centred on transformation towards a model in which waste is converted into renewable resources.

Group for Research in Economics and Finance (GREF)

The GREF's **CLI-MA-X** project studies how to implement carbon tax to achieve the desired reduction in emissions, thus minimising their negative impact on aggregate productivity.



Annual ReportEsade Foundation
2022 - 2023

- 1 We are Esade
- 2 Training that transforms the best talent
- 3 Innovation and impact entrepreneurship
- 4 Committed to society
- 5 We research with purpose
- 6 We promote social debate
- 7 We are economically sustainable
- 8 Annexes

EsadeEcPol

Our Centre for Economic Policy, EsadeEcPol, produced various reports evaluating public policies and all have had a significant impact in national and international media, in addition to generating public debate. These evaluations include *Estimating the effect of the Spanish gas price cap, Impact of the VAT increase on the consumption of sugar-sweetened beverages in Spain, Reduced VAT on basic foods: evaluation and recommendations and Education in the Shade in Spain*. EsadeEcpol has also written various working papers that have been published in the academic journals *Journal of Public Economics, SERIEs and Teaching and Teacher Education*.

**Leadership Chair**

The 6th Sustainable Development Goals Observatory report, *Driving sustainability in a polycrisis environment*, produced in conjunction with the Social Observatory of the La Caixa Foundation, focuses on the polycrisis scenario (the increase in food and energy prices, inflation, and supply chain disruption), which is making it difficult to implement the SDGs, and urges to drive transformation, international cooperation, action and commitment to civil society.

**Corporate Governance Centre**

The study *The Role of the Audit Committee in ESG Issues* analyses the role of these committees in environmental, social and governance issues. It also points out the main obstacles they face, both now and in the coming years.

**Institute for Social Innovation**

Within the framework of the 15th edition of our Esade-PwC Social Leadership Program, we presented the report *Systemic Change and NGOs. Boosting advanced multisectoral collaborations*, which highlights the importance of developing systemic and collaborative thinking for driving relevant changes in social organisations. The report also presents examples and guides for promoting more effective cross-sectoral collaborations.



- 1 We are Esade
- 2 Training that transforms the best talent
- 3 Innovation and impact entrepreneurship
- 4 Committed to society
- 5 We research with purpose
- 6 We promote social debate**
- 7 We are economically sustainable
- 8 Annexes

6. We promote social debate



As part of our commitment to the transformation with purpose of organisations and society, we share the knowledge we generate, disseminating it through our own channels and in the media, and organise relevant events in different areas.

6.1. Esade in the media

During the 2022-2023 academic year, Esade generated more than 9,000 impacts in various media around the world, inspired by key topics for our institution:

KEY TOPICS FOR ESADE



Geopolitics
and energy



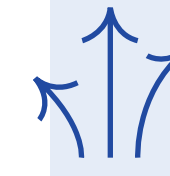
Technology
and innovation



Sustainability



Quality



Talent and diversity



Management
and leadership



Economy
and employment



Entrepreneurship
and business

Social responsibility
and impact

We have also disseminated key content in blogs and on platforms created in collaboration leading media, such as *Cinco Días* and *Forbes US*.

Media outreach initiatives

State of the labour market in Spain. Infojobs-Esade report

This report analyses the employment data of the InfoJobs platform. In this edition we have addressed, in particular, the application of the labour reform and its impact on the different types of employment contracts.

Diana Esade

In the 14th edition of Diana Esade —an assessment tool for the media and general public— we have analysed the difference between the forecasts of major institutions in Spain with regard to economic growth and the unemployment rate.

Career Impact para Profesionales de los Medios de Comunicación

The 4th edition of the Career Impact Program for Media Professionals continues to support talented professionals in their career development through subsidised places on our programmes for media professionals. To date, 17 journalists have been given subsidised places.



- 1 We are Esade
- 2 Training that transforms the best talent
- 3 Innovation and impact entrepreneurship
- 4 Committed to society
- 5 We research with purpose
- 6 We promote social debate
- 7 We are economically sustainable
- 8 Annexes

Strategic partnerships with the media

200 Millones de Segundos»*Retina*

Our professors Irene Unceta, Xavier Ferrás, Esteve Almirall and Sira Abenoza examined the impact on life, economy and society of key technologies such as artificial intelligence and quantum computing.

Articles published as part of this project:

- [«Yonquis del lenguaje: las tres guerras por los tronos de GPT-4»](#)
- [«Palabra de algoritmo, amén. Tres frenos contra la IA que parece humana»](#)
- [«El ordenador cuántico es la nueva carrera a la Luna. ¿Puede Europa llegar primero?»](#)
- [«Sócrates contra ChatGPT: recuperar el diálogo para salvar la democracia»](#)

Generación de Oportunidades*Europa Press*

Some of the largest companies have been discussing the four areas identified as vectors of change in the new global scenario: future of work (with the participation of Esade Executive Education), purpose and sustainability, innovation and growth, and technology and digitalisation.

Claves para Emprender»*Expansión*

This is a project developed with Spanish newspaper *Expansión* for the 30th anniversary of the **Esade Entrepreneurship Institute** to share knowledge and experiences to guide those who want to start their own business. «Keys to Entrepreneurship» has the participation of founders of successful startups, investors who support innovation in Spain, Esade professors linked to entrepreneurial activity and former alumni who have started their own businesses.

Articles published as part of this project:

- [«¿Eres emprendedor? Tres consejos para lograr que un inversor se fije en tu negocio»](#)
- [«La importancia de lograr el "equipo A"»](#)
- [«Ver soluciones donde otros solo ven problemas»](#)
- [«La habilidad para ejecutar la idea y resolver problemas»](#)
- [«El impacto social de la startup»](#)



6.2. Social debate events

We have contributed to social debate and the dissemination of knowledge by organising 88 in-person, hybrid and online events which were attended by around 8,000 people in total

88
events



8,000
attendees



- 1 We are Esade
- 2 Training that transforms the best talent
- 3 Innovation and impact entrepreneurship
- 4 Committed to society
- 5 We research with purpose
- 6 We promote social debate
- 7 We are economically sustainable
- 8 Annexes

Opening ceremony for the 2022-2023 academic year

October 2022

Federico Linares, president of EY España, delivered the opening speech for the 2022-2023 academic year at a ceremony during which he emphasised the active role of Esade students in society: «You have the responsibility to use your influence to create social impact (...). Until the last day of your life, you can change the world».

Xavier Mendoza, director general of Esade, mentioned the «exponential development of science and scientific advances, and the colossal impact of artificial intelligence», which will mark the professional future of all young people. Also present at the opening were **Jaume Guardiola**, president of the Board of Trustees of the Esade Foundation, and **Josep Antoni Rom**, rector of Ramon Llull University.



Presentation of the Retail Challenges Barometer 2023

November 2022

With the support of SEIDOR as a premium member, and the collaboration of Atrevia, we presented our retail barometer for the third consecutive year. In this edition we looked at some of the most urgent issues and changes facing the sector. Among other aspects, the report highlights the sector's advancement towards phygital, which consists of the convergence of physical and online sales channels.



Presentation of the SDG Barometer 2022

November 2022

We present the findings of this barometer under the title *Aligning Spanish companies with the SDGs*, developed in collaboration with SEIDOR and United VARs to know the state, importance and implementation of the sustainable development goals and Agenda 2030 in companies in Spain.

Talent Scholarship Award Ceremony 2022-2023

November 2022

This year again, Esade strengthened its commitment to equal opportunities, inclusion, diversity and support for young talent. We therefore allocate **4.6 million euros to the Talent Scholarship Programme**. At the ceremony in November, we awarded 307 scholarships to students with a combination of academic excellence and financial needs.



- 1 We are Esade
- 2 Training that transforms the best talent
- 3 Innovation and impact entrepreneurship
- 4 Committed to society
- 5 We research with purpose
- 6 We promote social debate
- 7 We are economically sustainable
- 8 Annexes

Esade Foundation Assembly of Trustees

February 2023

As part of the annual Esade Foundation Assembly of Members (Assembly of Trustees), at the Pedralbes campus we held the lunch colloquium «Crisis and Response to a Europe in Turmoil» with **Cristina Gallach**, Special Commissioner for the Alliance for a New Language Economy.

29th Encuentro Anual del Sector de Tecnología Sanitaria (Annual Healthtech Conference)

June 2023

Entitled '*Key Factors of Healthtech and its Procurement*', the conference, organised by Esade and the Spanish Federation of Healthcare Technology Companies (Fenin), gathered together representatives of public authorities, healthcare managers and professionals in the sector. The conference was opened by the Health Minister, **José Manuel Miñones**.

Esade conference series. SERES Foundation

In the last edition of this annual initiative, organised by the SERES Foundation, we discussed human rights, greenwashing, the responsible company/vulnerable consumer relationship and corporate responsibility issues in senior management.

Do Better, our knowledge hub

During the 2022-2023 academic year, in our **Do Better** hub we published original, quality content and resources in different formats, from analysis and opinion articles to podcasts and event reports, [interactive graphs](#) and [video reports](#), all with the informative tone, rigour and global perspective expected of our institution. .



295,821
website users

150
pieces of published content
(in Spanish and English)

35
new collaborators

6.3. Presence on social networks

Our profile on social networks is essential for disseminating academic and research initiatives among thousands of followers. It is also necessary for encouraging social debate among our community and for strengthening our positioning in key areas such as social impact, technology, talent and academic innovation.

Moreover, we have extended our reach with a profile on TikTok, to connect with the younger community in particular.

>454,000

followers in total
(Facebook, Twitter/X, LinkedIn, Instagram, YouTube and TikTok)

>18M
views on TikTok

>17.3%
followers on LinkedIn

- 1 We are Esade
- 2 Training that transforms the best talent
- 3 Innovation and impact entrepreneurship
- 4 Committed to society
- 5 We research with purpose
- 6 We promote social debate
- 7 We are economically sustainable**
- 8 Annexes

7. We are economically sustainable

We closed the 2022-2023 academic year with a gross income of €152,500 M and net income of €139.53 M, representing an increase of 14% and 13%, respectively, over the previous year.

	Curso 2022-2023	% change
Business School	€ 69,42 M	
Executive Education	€ 39,71 M	
Law School	€ 23,42 M	
Research	€ 4,99 M	
Corporate units	€ 1,99 M	
GROSS INCOME	€ 152,50 M	↑ 14 %
NET INCOME	€ 139,53 M	↑ 13 %

The increase in revenue is due to the increase in undergraduate studies at the **Business School** and **Law School**. These include the new international degree course **BiTLaSI** (Bachelor in Transformational Leadership and Social Impact) and the start of the **BAIB** (Bachelor in Artificial Intelligence for Business).

With regard to **Executive Education**, there has been an increase in revenue from the online **Executive Masters** and **Open** programmes. We have also had an increase and consolidation of **Corporate Learning Solutions** programmes, and the **MISK** programme continues to have a significant impact.

As regards expenditure, we have implemented a strategy to try to contain costs, to compensate for the impact of price increases due to inflation and the significant increase in the cost of supplies. Operating expenses have increased by 15.6% in relation to revenue. This is aimed at making Esade

more economically sustainable with the ultimate aim of continuing to commit to new investments to improve the experience for students.

Net profit for the 2022-2023 academic year was €6.6 M, almost 14% less than the previous year. This difference was primarily due to the 10% increase in amortisation costs associated with the investments made during the 2022-2023 academic year and previous years. Investments were made in the new space, the **Graduate Building**, at the Sant Cugat Campus (the former Creàpolis Parc de la Creativitat), which offers many opportunities for the coming years.

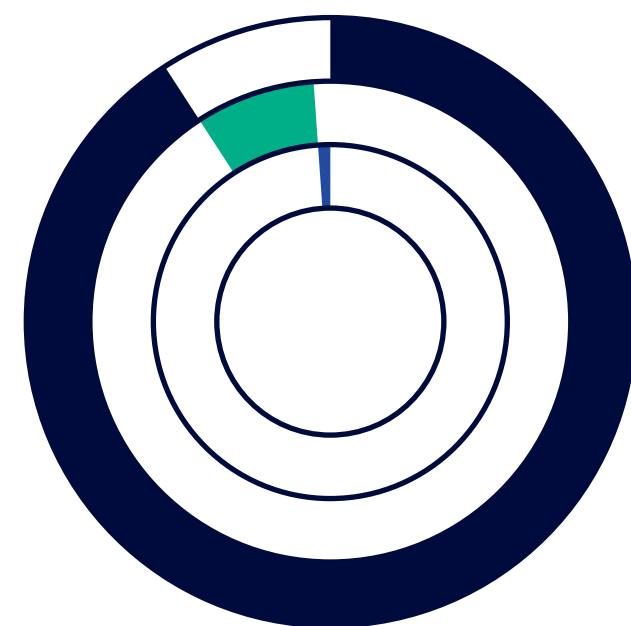
Esade's economic soundness enables us to progress towards our strategic goals as a school of global reference

- 1 We are Esade
- 2 Training that transforms the best talent
- 3 Innovation and impact entrepreneurship
- 4 Committed to society
- 5 We research with purpose
- 6 We promote social debate
- 7 We are economically sustainable
- 8 Annexes

7.1. Private contributions

Esade receives contributions from companies and foundations, as well from individual donors —former alumni, employees and professors—. These contributions have allowed us to offer **295 scholarships** for the 2023-2024 academic year

€5 M in private contributions during the 2022-2023 academic year.



91% from organisations

8% from individual donors

1% from endowment returns

493

individual donors

86

collaborating organisations

Allocation:

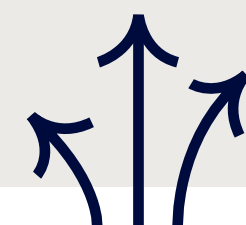
€3.2 M

research



€1.5 M

Scholarship Program



€0.3 M

founding purpose and other allocations





- 1 We are Esade
- 2 Training that transforms the best talent
- 3 Innovation and impact entrepreneurship
- 4 Committed to society
- 5 We research with purpose
- 6 We promote social debate
- 7 ~~More~~ ~~economic~~ ~~mente~~ ~~sustainable~~
- 8 Annexes



8. Annexes

8.1. International network of academic partners

8.1.1 Law School

130 academic partners in 39 countries



Latin America

Argentina

- Universidad de Buenos Aires, Facultad de Derecho
- Universidad Torcuato di Tella

Brazil

- Fundação Getulio Vargas, Escola de Direito de São Paulo
- Fundação Getulio Vargas, Direito Rio de Janeiro
- FGV EPGE, EPGE Brazilian School of Economics and Finance (Rio)
- Universidade de São Paulo, Faculdade de Direito
- Universidade de São Paulo, School of Economics, Business and Accounting (FEAUSP)
- Universidade de São Paulo - Faculdade de Filosofia, Letras e Ciências Humanas (FFLCH-USP)*

Chile

- Pontificia Universidad Católica de Chile (UC), Facultad de Derecho
- Pontificia Universidad Católica de Chile (UC), History, Geography and Political Science

Colombia

- Universidad de los Andes, Facultad de Derecho
- Universidad de los Andes, Facultad de Ciencias Sociales / Escuela de Gobierno
- Universidad de los Andes, Facultad de Economía
- Pontificia Universidad Javeriana, Facultad de Ciencias Jurídicas
- Pontificia Universidad de Javeriana, Facultad de Ciencia Económicas y Administrativas
- Pontificia Universidad Javeriana, Facultad de Ciencias Políticas y Relaciones Internacionales
- Pontificia Universidad Javeriana (CALI), Facultad de Humanidades y Ciencias Sociales

Mexico

- ITESM Campus Monterrey, Derecho y Ciencia Política

Peru

- Pontificia Universidad Católica de Perú, Facultad de Derecho
- Universidad del Pacífico, Facultad de Economía y Finanzas

Annual ReportEsade Foundation
2022 - 2023

- 1 We are Esade
- 2 Training that transforms the best talent
- 3 Innovation and impact entrepreneurship
- 4 Committed to society
- 5 We research with purpose
- 6 We promote social debate
- 7 We are economically sustainable
- 8 Annexes

North America**Canada**

- Western University, Faculty of Law
- University of British Columbia, Faculty of Arts
- Queen's University, Faculty of Law

United States

- Benjamin N. Cardozo School of Law
- Boston College Law School
- Columbia Law School
- Cornell University, Law School
- Emory University, College of Arts & Sciences
- Fordham University School of Law
- Fordham University, Rose Hill and Lincoln Center Colleges
- George Washington University
- Georgetown University Law Center
- Indiana University, Maurer School of Law
- Indiana University Bloomington, Hamilton Lugar School of Global and International Studies*
- Stanford Law School
- Tulane University, Law School
- University at Buffalo, School of Law
- University of Miami, School of Law
- University of Minnesota, Law School
- University of Pennsylvania, Carey Law School
- University of San Diego, School of Law
- American University Washington College of Law
- University of Illinois at Urbana Champaign, College of Liberal Arts and Sciences
- The University of Texas at Austin, School of Law*

Oceania**Australia**

- Melbourne Law School
- University New South Wales, Law School & Arts and Social Sciences School

New Zealand

- University of Victoria, Wellington, Faculty of Law **THEMIS**
- University of Auckland, Auckland Law School

Europe**Germany**

- Bucerius Law School
- Universität Freie Berlin, Department of Law **THEMIS**
- Universität Freie Berlin, Department of Business and Economics*
- Universität Greifswald, Faculty Law and Economics

Austria

- Universität Graz, Law Faculty
- WU, Vienna University of Economics & Business **THEMIS**

Belgium

- Université Catholique de Louvain, Faculty of Law and Criminology
- Université Libre de Bruxelles (ULB), Faculty of Philosophy and social Sciences*

Denmark

- University of Copenhagen, Faculty of Law

Spain

- ICADE, Faculty of Law
- DEUSTO Law School

Finland

- University of Helsinki, Faculty of Law
- University of Helsinki, Faculty of Social Sciences*

France

- SciencesPo, Institut d'Etudes Politiques de Paris, Droit
- SciencesPo, Institut d'Etudes Politiques de Paris, Relations Internationales
- Université de Montpellier, Faculté de Droit et Science Politique
- Université de Strasbourg, Faculté de Droit
- Ecole de l'Université de Strasbourg, Sciences Po
- Université de Strasbourg, Faculté des Sciences Économiques et de Gestion (FSEG)
- Université Paris II (Panthéon-Assas), Droit, Science Politique et Économie
- Université Paris Est Créteil, Faculté de Droit **THEMIS**

Ireland

- Trinity College Dublin, School of Law
- Trinity College Dublin, School of Social Sciences and Philosophy

Italy

- Università C. L. Bocconi, Law
- Università degli Studi di Bologna, Department of Legal Studies
- Università Bologna, Department of Political Science
- Università degli Studi di Roma Tre, Department of Law
- Università degli Studi di Roma Tre, Department of Economics
- Università degli Studi di Roma Tre, Department of Political Science

Norway

- University of Oslo, Faculty of Law
- University of Oslo, Faculty of Social Sciences

Netherlands

- Maastricht University, Faculty of Law **THEMIS**
- University of Amsterdam, Faculty of Law
- Erasmus University, School of Economics

Portugal

- Universidade de Coimbra, Faculdade de Direito
- Universidade de Coimbra, Faculdade de Economia
- Católica Global School of Law, Lisbon Law School
- Universidade Nova de Lisboa, Faculdade de Direito **THEMIS**

Poland

- SGH Warsaw School of Economics

United Kingdom

- Center for Transnational Legal Studies (CTLS)
- The University of Edinburgh, Edinburgh Law School
- University of Warwick, Faculty of Social Sciences*

Czech Republic

- Charles University, Faculty of Social Sciences

Russia

- National Research University Higher School of Economics (HSE), Faculty of Law
- National Research University Higher School of Economics (HSE), Faculty of Social Sciences

Sweden

- University of Gothenburg, School of Business, Economics and Law

Switzerland

- Universität Bern, Faculty of Law
- Universität Fribourg, Faculty of Law
- Universität Fribourg, Department of Economics*
- University of St. Gallen, Undergraduate Economics & Politics*
- University of St. Gallen, Law School
- University of St. Gallen, Law School **THEMIS**

- 1 We are Esade
- 2 Training that transforms the best talent
- 3 Innovation and impact entrepreneurship
- 4 Committed to society
- 5 We research with purpose
- 6 We promote social debate
- 7 We are economically sustainable
- 8 Annexes

Asia

China

- Peking University Law School (Pekín)
- Peking University, School of Transnational Law (Shenzhen)
- China University of Political Science and Law (Pekín)
- Renmin University of China, Law School (Pekín)
- Fudan University, Law School (Shanghai)
- Shanghai Jiao Tong University, Koguan Law School (Shanghai)
- Shanghai Jiao Tong University, School of International and Public Affairs (Shanghai)

India

- Jindal Global University, Law School
- Jindal Global University, School of International Affairs

Hong Kong

- City University of Hong Kong, School of Law **THEMIS**

Japan

- Hitotsubashi University, Faculty of Law
- Hitotsubashi University, Faculty of Social Sciences
- Hitotsubashi University, Faculty of Economics
- Keio University, Faculty of Economics

Korea

- Yonsei Law School
- Sogang University, School of Social Sciences

Malaysia

- University of Malaya, Faculty of Law
- University of Malaya, Faculty of Economics and Administration

Singapore

- Singapore Management University, School of Law
- Singapore Management University, School of Law **THEMIS**
- Singapore Management University, School of Social Sciences

Taiwan

- NTU, College of Law
- NTU, College of Law **THEMIS**

Middle East

Lebanon

- American University of Beirut, Faculty of Arts and Sciences

Israel

- The Hebrew University of Jerusalem, The Faculty of Social Sciences
- The Hebrew University of Jerusalem, Faculty of Law

Turkey

- Koç University, Law School
- Koç University, College of Social Sciences and Humanity
- Koç University, College of Administrative Sciences and Economics

8.1.2. Business School

137 academic partners in 46 countries

Europe

Germany

- Frankfurt School of Finance and Management
- University of Mannheim, Business School
- University of Mannheim, School of Business Informatics and Mathematics
- Technical University of Munich, TUM School of Management
- Universität zu Köln, WisoFakultät
- WHU–Koblenz, Otto-Beisheim Graduate School

Austria

- Wirtschaftsuniversität Wien

Belgium

- Université Catholique de Louvain, Institut d'Administration et de Gestion

Denmark

- Copenhagen Business School

Finland

- Aalto University Business School

France

- HEC School of Management
- Institut Français de la Mode
- SciencesPo

Hungary

- Corvinus University of Budapest

Iceland

- Reykjavik University

Ireland

- University College Dublin, Michael Smurfit Graduate School of Business
- University College Dublin, Lochlann Quinn School of Business

Italy

- Università Commerciale Luigi Bocconi, SDA Bocconi
- Instituto Politécnico di Milano

Norway

- NHH Norwegian School of Economics and Business Administration
- BI Norwegian Business School

Annual ReportEsade Foundation
2022 - 2023

- 1 We are Esade
- 2 Training that transforms the best talent
- 3 Innovation and impact entrepreneurship
- 4 Committed to society
- 5 We research with purpose
- 6 We promote social debate
- 7 We are economically sustainable
- 8 Annexes

Netherlands

- Erasmus Universiteit, Rotterdam School of Management

Poland

- Warsaw School of Economics (SGH)

Portugal

- Universidade Catolica Portuguesa, FCEE
- Universidade Nova de Lisboa, Nova School of Business & Economics

United Kingdom

- City University of London, Bayes Business School
- London Business School (LBS)
- London School of Economics and Political Science (LSE)
- The University of Manchester, Alliance Manchester Business School
- University of Edinburgh, Management School and Economics
- Imperial College London
- The University of Warwick, Warwick Business School

Czech Republic

- Prague University of Economics & Business

Russia

- Saint Petersburg State University, Graduate School of Management

Sweden

- Stockholm School of Economics

Switzerland

- Universität St. Gallen, Graduate School for Business Administration, Economics, Law and Social Sciences

North America**Canada**

- École des Hautes Études Commerciales de Montreal
- McGill University, Desautels Faculty of Management
- Queen's University, Smith School of Business
- University of British Columbia, Sauder School of Business
- University of Toronto, Rotman School of Management
- University of Western Ontario, Richard Ivey School of Business
- York University, Schulich School of Business

United States

- Babson College, Babson Park
- Bentley University
- Boston College, Carroll School of Management
- Cornell University, Samuel Curtis Johnson Graduate School of Management
- Cornell University, Dyson School of Applied Economics and Management at the SC Johnson College of Business
- Dartmouth College, Tuck School of Business

- Duke University, The Fuqua School of Business
- Emory University, Roberto C. Goizueta Business School
- Georgetown University, The McDonough School of Business
- Indiana University, Kelley School of Business
- Loyola University, Joseph A. Butt, S. J. College of Business Administration
- New York University, Leonard N. Stern School of Business
- Northwestern University, Kellogg School of Management
- Rensselaer Polytechnic Institute, Lally School of Management and Technology
- University of California at Berkeley, Haas School of Business
- University of California Los Angeles, (UCLA), The John E. Anderson Graduate School of Management
- University of Chicago, Booth School of Business
- University of Illinois at Urbana-Champaign, Gies College of Business
- University of Michigan, Ross School of Business
- University of Michigan School of Information
- University of Minnesota, Carlson School of Management
- University of North Carolina at Chapel Hill, Kenan-Flagler Business School
- University of South Carolina, Darla Moore School of Business
- University of Pennsylvania, the Wharton School
- University of Richmond, Robins School of Business
- University of San Diego, School of Business Administration
- University of Southern California, Marshall School of Business

- University of Texas at Austin, McCombs School of Business
- University of Virginia, Darden School of Business
- University of Virginia, McIntire School of Commerce
- Washington University in St. Louis, Olin School of Business

Latin America**Brazil**

- Fundação Dom Cabral
- Fundação Getúlio Vargas, Escola de Administração de Empresas de São Paulo (EAESP)
- Fundação Getúlio Vargas, Escola Brasileira de Administração Pública de Empresas (EBAPE)

Chile

- Pontificia Universidad Católica de Chile, Escuela de Administración
- Universidad Adolfo Ibáñez, Escuela de Negocios

Colombia

- Universidad de los Andes, School of Management

Costa Rica

- INCAE Business School

El Salvador

- Universidad Centroamericana José Simeón Cañas de El Salvador

Guatemala

- Universidad Rafael Landívar de Guatemala

Mexico

- Instituto Tecnológico de Monterrey, EGADE Business School
- Instituto Tecnológico Autónomo de México (ITAM)

Nicaragua

- Universidad Centroamericana de Managua (Nicaragua)

Peru

- Universidad del Pacífico

Africa**South Africa**

- University of Pretoria, GIBS Business School
- University of Cape Town, The Graduate School of Business

- 1 We are Esade
- 2 Training that transforms the best talent
- 3 Innovation and impact entrepreneurship
- 4 Committed to society
- 5 We research with purpose
- 6 We promote social debate
- 7 We are economically sustainable
- 8 Annexes

Asia

China

- China Europe International Business School (CEIBS)
- Chinese University of Hong-Kong, Faculty of Business Administration
- Chinese University of Hong-Kong at Shenzhen
- City University of Hong Kong, College of Business
- The University of Hong Kong, Faculty of Business & Economics
- Fudan University, Fudan School of Management
- Hong Kong University of Science & Technology, HKUST Business School
- Peking University, Guanghua School of Management
- Renmin University of China, School of Business
- Shanghai Jiao Tong University, Antai College of Economics & Management
- Shanghai Jiao Tong University, Shanghai Advanced Institute of Finance (SAIF)
- Sun Yat-Sen University, Lignan University College
- Tongji University, School of Economics and Management
- Tsinghua University, School of Economics & Management
- Zhejiang University, School of Management

India

- Indian Institute of Management at Ahmedabad (IIMA)
- Indian Institute of Management at Bagalore (IIMB)
- Indian Institute of Management at Calcutta
- Indian School of Business (ISB)
- Xavier School of Management (XLRI)

Japan

- Hitotsubashi University, Graduate School of International Corporate Strategy
- Hitotsubashi University, Faculty of Commerce and Management
- International University of Japan, Graduate School of International Management
- Keio University, Keio Business School
- Keio University, Graduate School of Media Design
- Waseda University, School of Commerce

Korea

- Korea University Business School (KUBS)
- Sungkyung Kwan University (SKKU)

Philippines

- Asian Institute of Management

Singapore

- Nanyang Technological University, Nanyang Business School
- National University of Singapore, NUS Business School
- Singapore Management University (SMU), Lee Kong Chian School of Business

Taiwan

- National Chengchi University, College of Commerce
- National Taiwan University, College of Management

Thailand

- Thammasat University, Thammasat Business School

Vietnam

- Royal Melbourne Institute of Technology (RMIT)

Oceania

Australia

- University of Melbourne, Melbourne Business School
- SP Jain School of Global Management
- University of New South Wales, Australian Graduate School of Management
- University of Sydney, Business School
- Royal Melbourne Institute of Technology

New Zealand

- University of Otago, School of Business

Middle East

Egypt

- The America University in Cairo, School of Business

United Arab Emirates

- American University in Dubai (UAD)

Israel

- Tel-Aviv University, Collier School of Management

Turkey

- Koç University, Graduate School of Business



8.2. Acknowledgements

Companies and foundations that contribute to our research projects and our founding purpose

HONORARY MEMBERS

- La Caixa Foundation
- Repsol Foundation
- Meta
- Santander Universidades

MEMBERS

- Agbar
- Banco Sabadell
- Banco Santander
- Grup Med Corporatiu
- Col·legi de Metges de Barcelona
- ENEL
- European Climate Foundation
- NTT DATA

COLLABORATORS

- Adevinta
- AENA
- Almirall
- BASF
- BAT
- Carasso Foundation
- Cementos Molins
- European Investment Bank (EIB)
- Fira de Barcelona
- Fundación Bertelsmann
- Fundación Caja de Ingenieros
- Fundación Tellus Herbert Smith Freehills
- Fundación Randstad

- Fundación Universia
- Gilead
- Government of Andorra
- ISDIN
- ISS Facility Services
- King Baudouin Foundation (KBF)
- KSNET
- Laudes Foundation
- Leroy Merlin
- Mercabarna
- Neinor Homes
- Open Value Foundation
- Red.Es
- Roca Group
- SpainNAB
- Save the Children Fund
- Vinci

OTHER COLLABORATORS

- AGM Abogados
- Agrolimen
- Barcelona City Council
- Asociación Española de Fundaciones
- Baker & McKenzie
- BDO
- Broseta
- Barcelona de Infraestructuras Municipales (BIMSA)
- Caprabo
- CaixaBank
- Clifford Chance
- CMS Albiñana & Suarez de Lezo
- Crowe

- Cuatrecasas
- Danone
- Deloitte Legal
- Dentons
- Barcelona Provincial Council
- Entrepreneur Futures Network
- European Parliament
- European Venture Philanthropy Association (EVPA)
- EY
- Ebone
- Fieldfisher
- Font & Yildiz
- Friedrich Naumann Foundation for Freedom
- Garrigues
- Gómez-Acebo & Pombo
- Grupo Mémora
- IBM
- KPMG
- La Unió
- Leitat
- Nestlé España
- Osborne Clarke
- Pedrosa Lagos
- Pérez-Llorca
- Port of Barcelona
- PwC
- RCD
- RocaJunyent
- SEAT
- Suara Cooperativa
- Uría Menéndez
- Vialgis Abogados

Companies and foundations that contribute to the Scholarship Program

NAMED SCHOLARSHIPS

- Agbar
- Allianz
- Cellnex
- Coca-Cola Europacific Partners
- Colonial
- Member Offices of the Professional Council of the Law School
- Fluidra
- Fundación Banco Sabadell
- Fundación Nous Cims
- Fundación Puig
- Fundación Ramón Areces
- Gaes, una marca Amplifon
- Grup Heracles
- Grupo Indukern
- Lucta
- ICL Iberia
- Mémora
- Mercury Capital
- PENTEO
- Santander Universidades
- SEAT
- SEIDOR

GENERAL SCHOLARSHIP PROGRAMME

- Irestal Group
- Fundación ACS
- Fundación Caja de Ingenieros
- RESA
- Residencia Universitaria Sarriá
- RWE Renewables Iberia

CEMS Partners

- Google

- 1 We are Esade
- 2 Training that transforms the best talent
- 3 Innovation and impact entrepreneurship
- 4 Committed to society
- 5 We research with purpose
- 6 We promote social debate
- 7 We are economically sustainable
- 8 Annexes

- 1 We are Esade
- 2 Training that transforms the best talent
- 3 Innovation and impact entrepreneurship
- 4 Committed to society
- 5 We research with purpose
- 6 We promote social debate
- 7 We are economically sustainable
- 8 Annexes

Esade Foundation Assembly of Members

LEGAL ENTITIES

- Agbar
- Allianz
- Banco Sabadell
- Barcelona Chamber of Commerce
- BASF
- BBK-Kutxabank
- CaixaBank
- Caprabo
- Cellnex
- Cementos Molins
- Coca-Cola Europacific Partners
- Colonial
- Deloitte
- EY
- Fluidra
- Fundació Nous Cims
- Fundación ACS
- Fundación Banco Sabadell
- Fundación Caja de Ingenieros
- Fundación La Caixa
- Fundación Puig
- Fundación PwC
- Fundación Repsol
- Gaes, una marca Amplifon
- Global Alumni
- Grupo Indukern
- IBM
- ICL Iberia
- ISS Facility Services
- Lucta
- Mémora
- Mercury Capital
- Nestlé España
- NTT DATA
- PENTEO
- Santander Universidades
- SEAT
- SEIDOR
- Werfen Group



CAMPUS BARCELONA · PEDRALBES

Av. Pedralbes, 60-62

08034 Barcelona (Spain)

Tel.: +34 932 806 162

Fax: +34 932 048 105

CAMPUS BARCELONA · SANT CUGAT

Av. Torre Blanca, 59

08172 Sant Cugat del Vallès

Barcelona (Spain)

Tel.: +34 932 806 162

Fax: +34 932 048 105

CAMPUS MADRID

C. Mateo Inurria, 25-27

28036 Madrid (Spain)

Tel.: +34 913 579 714

Fax: +34 917 030 062